



**PILOUS** 

**PROFESSIONAL BANDSAWS**

- Manual
- Gravitation
- Hydraulic gravitation
- Semiautomatic
- Automatic
- Semiautomatic DC
- Automatic DC
- Special



2016  
Made in EU  
Czech Republic.

## ARG 105 mobil



1385×13×0,65

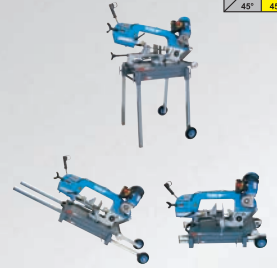


	90°	+45°	+60°
●	105	70	40
■	105	65	40
■	105×110	65×85	40×45

## ARG 130 mobil



1730×13×0,65



## ARG 130



1730×13×0,65



## ARG 130 super



1730×13×0,65



### ARG 130 / ARG 130 super / ARG 130 mobil

	90°	+45°	+60°
●	130	115	70
■	130	105	60
■	180×100	115×75	70×60

## ARG 200 plus



2490×20×0,9



## ARG 200



2490×20×0,9



### ARG 200

	90°	+45°	+60°
●	200	155	95
■	200	130	60
■	250×150	160×125	100×60

### ARG 200 plus

	90°	-45°	+45°	+60°
●	200	135	155	95
■	200	115	130	65
■	250×140	150×70	160×125	100×60

## ARG 220 plus



2600×27×0,9



## ARG 220



2600×27×0,9



### ARG 220

	90°	+45°	+60°
●	220	170	105
■	220	160	75
■	270×150	175×80	105×75

### ARG 220 plus

	90°	-45°	+45°	+60°
●	220	150	170	105
■	220	135	160	75
■	270×150	175×60	175×80	105×75

## ARG 250



ARG 250 / H / S.A.F.				
	90°	+45°	+60°	
●	250	200	125	
■	240	190	120	
■	300×200	190×190	120×130	

## ARG 250 plus €



ARG 250 plus €				
	90°	-45°	+45°	+60°
●	250	170	200	130
■	240	150	185	110
■	300×185	185×110	190×180	125×110

## ARG 250 plus



ARG 250 plus / H				
	90°	-45°	+45°	+60°
●	250	180	200	125
■	240	160	190	120
■	300×200	190×100	190×190	120×130

## ARG 250 plus S.A.F.



ARG 250 plus S.A.F.				
	90°	-45°	+45°	+60°
●	250	180	200	125
■	240	160	190	120
■	300×200	190×100	190×190	120×130

## ARG 300 F



ARG 300 F / H / S.A.F.				
	90°	+45°	+60°	
●	300	240	155	
■	290	225	150	
■	375×190	240×160	150×150	

## ARG 300 plus F



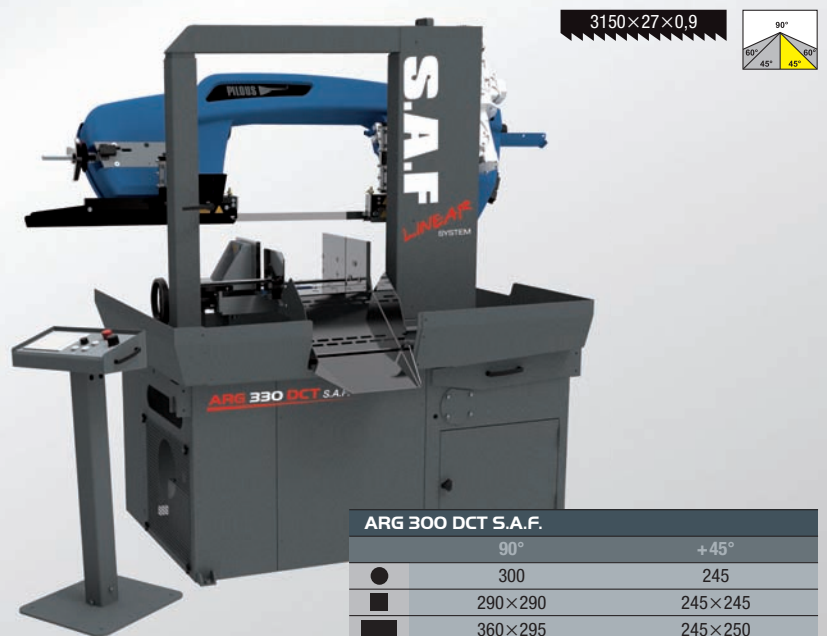
ARG 300 plus F / H				
	90°	-45°	+45°	+60°
●	300	220	240	155
■	290	195	225	150
■	375×190	240×100	240×160	150×150

## ARG 300 plus S.A.F.



ARG 300 plus S.A.F.				
	90°	-45°	+45°	+60°
●	300	220	240	155
■	290	195	225	150
■	375×190	240×100	240×160	150×150

## ARG 300 DCT S.A.F.



ARG 300 DCT S.A.F.		
	90°	+45°
●	300	245
■	290×290	245×245
■	360×295	245×250

## ARG 330 plus S.A.F.

3870×34×1.1



ARG 330 plus F / H.F. / S.A.F.				
	90°	-45°	+45°	+60°
●	330	240	250	165
■	320	200	230	150
■	400×200	250×140	250×170	150×150

## ARG 330 F

3870×34×1.1



ARG 330 F / H.F. / S.A.F.			
	90°	+45°	+60°
●	330	250	165
■	320	230	150
■	400×200	250×170	150×150

## ARG 330 DC S.A.F.

3870×34×1.1



ARG 330 DC S.A.F.	
	90°
●	330
■	310
■	360×310

## ARG 330 DC CF-NC automat

3870×34×1.1



ARG 330 DC CF-NC automat		SERVO system
	90°	
●	330	
■	310	
■	360×310	

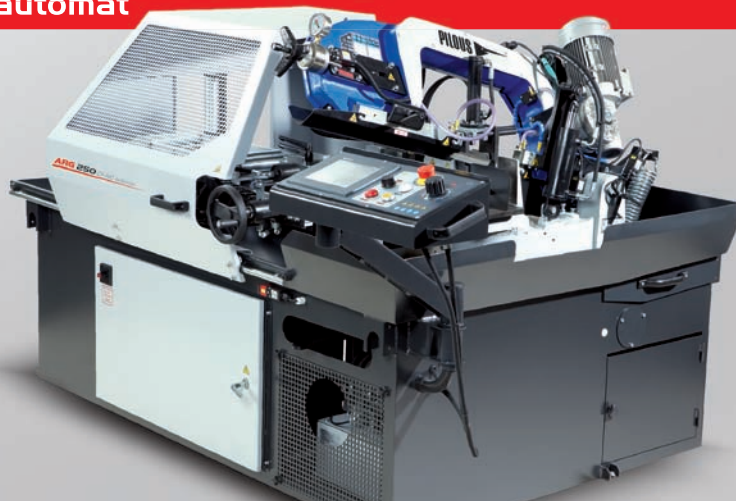
# CNC

SERVO  
SYSTEM



2710×27×0,9

## ARG 250 CF-NC automat

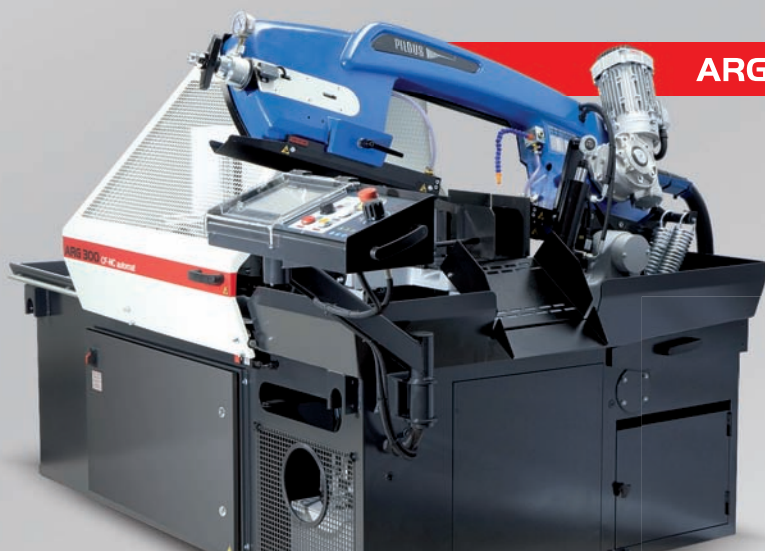


ARG 250 CF-NC automat	SERVO system
●	90° +45°
■	250 180
■	245 170
■	245×250 180×120



## ARG 300 CF-NC automat

3110×27×0,9



ARG 300 CF-NC automat	SERVO system
●	90° +45°
■	300 240
■	285 220
■	305×290 235×130

## ARG 300 DCT CF-NC automat



3150×27×0,9



ARG 300 DCT CF-NC automat	SERVO system
●	90° +45°
■	300 245
■	290×290 245×245
■	360×295 245×250

## ARG 330 CF-NC automat



3870×34×1,1



ARG 330 CF-NC automat	SERVO system
●	90° +45°
■	330 250
■	320 240
■	360×250 250×150

## ARG 400 plus S.A.F.

4300×34×1,1



## ARG 380 plus S.A.F.

4950×34×1,1



## ARG 500 plus S.A.F.

6040×41×1,3



### ARG 380 plus S.A.F.

	90°	-45°	+45°	±60°
●	380	380	380	270
■	340	340	340	255
■	510×340	350×340	350×340	235×340

### ARG 400 plus S.A.F.

	90°	-45°	+45°	+60°
●	400	290	300	200
■	400	250	300	200
■	460×300	300×170	300×200	200×200

### ARG 500 plus S.A.F.

	90°	-45°	+45°	±60°
●	500	500	500	350
■	450	440	440	310
■	620×450	440×450	430×450	310×400

## ARG 1100 special

6760×34×1,1

6760×41×1,3



### ARG 1100 special

1100×100 (400)

## IR 200



max. 200 mm

## ARG 520 DC S.A.F.



5770×41×1.3

ARG 520 DC S.A.F.	
	90°
	520
	500
	700×480



## ARG 520 DC CF-NC automat



5770×41×1.3

**CNC**  
*SERVO*  
SYSTEM

ARG 520 DC CF-NC automat	
	90°
	520
	500
	700×480



# ARG 640 DC S.A.F.



8100×54×1.6

## ARG 640 S.A.F.

	90°	-45°	-60°
●	640	640	375
■	550	550	375
■	1100×550	710×550	375×550

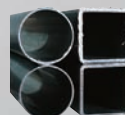


## OH 90



●	90
■	90
⚙️	400 V / 2,2 kW
⚙️	1400/min.
⊙	∅ 200 mm
kg	60 kg

## OHE 90



●	90
■	90
⚙️	400 V / 2,2 kW
⚙️	1400/min.
⊙	∅ 200 mm
kg	47 kg



# EMULSION



COOLcut Standard



COOLcut Opti



COOLcut Eco 65



COOLcut Bio 90



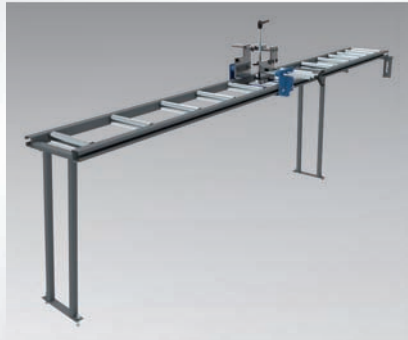
COOLcut Micro



COOLcut Antifreeze

# CONVEYORS

## System M



MVP 280

MR



M	(mm)	
	1500	3000
	200, 280	

## System D



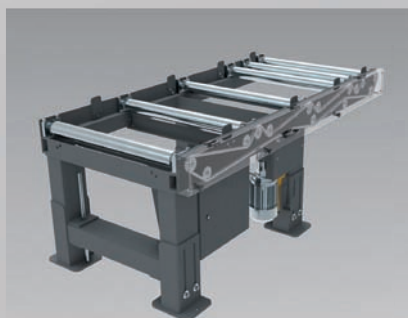
D0

DOD



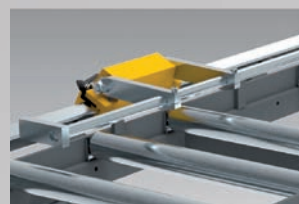
D	(mm)	
	2000	3000
	200, 300, 400	

## System K



KO

KOD



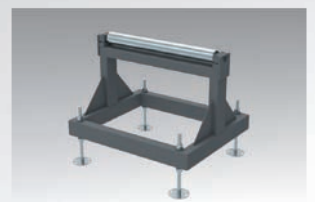
K	(mm)	
	1000	2000
	400, 520, 650, 750	

## System G



GV

KR



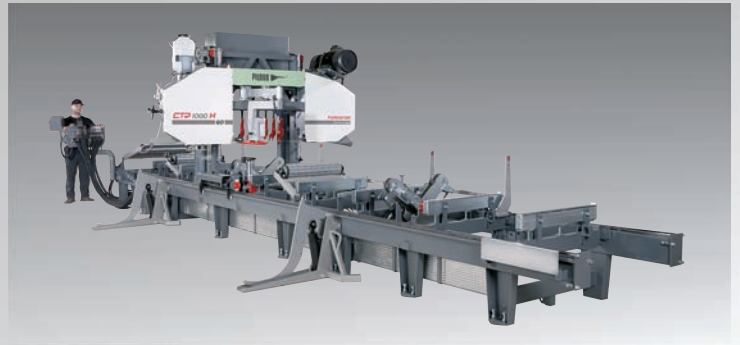
G	(mm)	
	2000	3000
	1000	



## Metal



## Wood

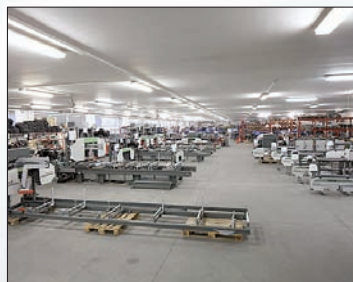


## Metal Sawblades

**MAX**tech

## Wood Sawblades

**MAX**wood



Official partner:

**Pilous**

**[www.pilous.cz](http://www.pilous.cz)**

CENTRAL OFFICE BRNO: Železná 9, 619 00 Brno, Czech Republic / Tel.: +420 543 25 20 10 / Fax: +420 543 25 20 11 / e-mail: [pilous@pilous.cz](mailto:pilous@pilous.cz)